

Dothiorella Rot and Canker

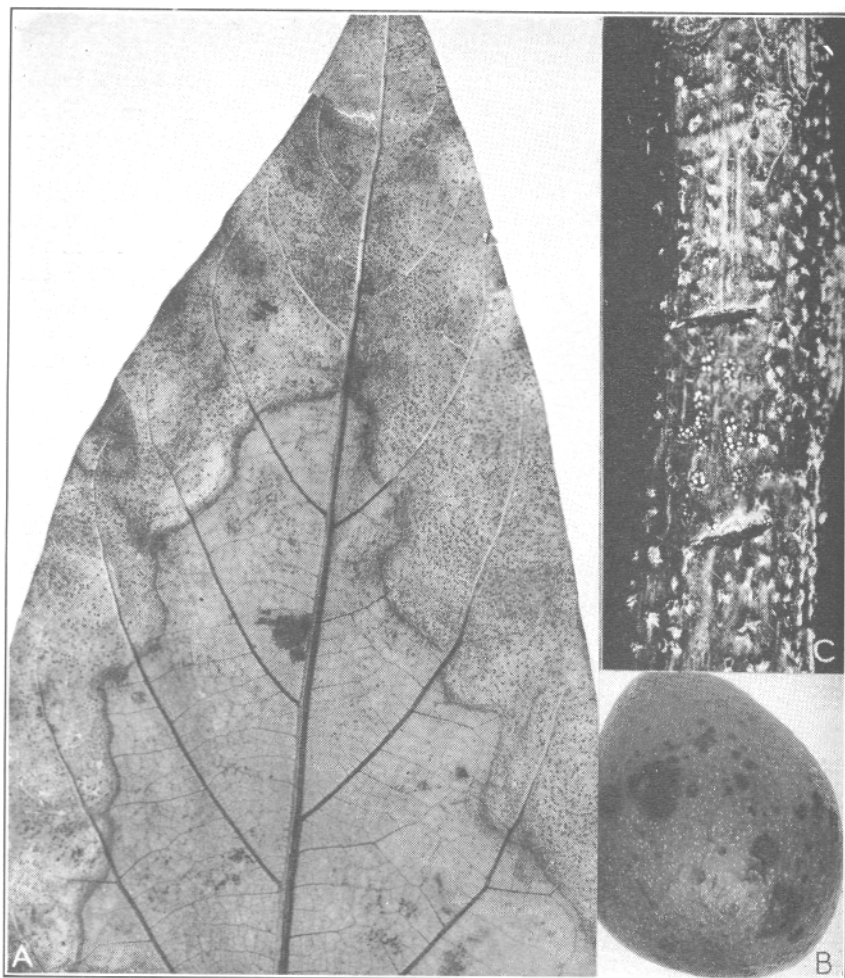
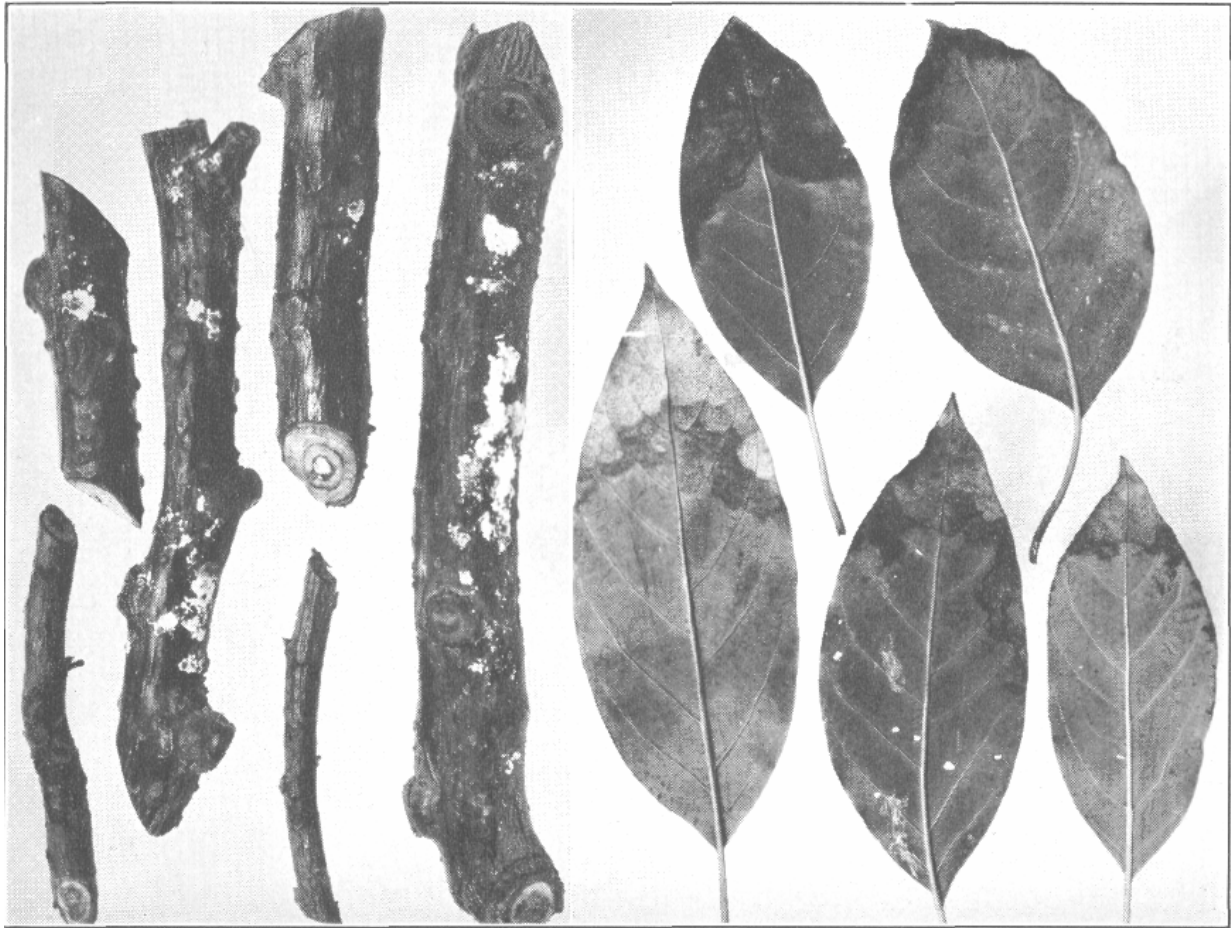


Fig. 1. Dothiorella rot: (A) avocado leaf (enlarged) with tip-burned area and Dothiorella fruiting bodies showing as dots in the dead area; (B) Dothiorella spots on off-bloom Fuertes; (C) dead avocado twigs enlarged showing fruiting bodies of Dothiorella breaking through the surface as small pustules; the surface has been shaved off between marks showing the white centers of fruiting bodies. (Photographs of A and B by Prof. W. T. Horne; C by Dr. Ira Ayer.)



Top—Canker on avocado twigs showing masses of sugary substance which exudes and dries.
Bottom—Tip-burn on avocado leaves. (Photo by Prof. W. T. Horne.)